



PRINCIPAL TOWER

LONDON EC2



PRINCIPAL TOWER  
2 PRINCIPAL PLACE | LONDON

---

£2,835,000 | LEASEHOLD

---

4 5 0 2 Principal Tower, 2 Principal Place, London EC2A 2FG

2 Bedroom Penthouse | 2 En-Suite | Powder Room | Kitchen | 3 Terraces | Lift



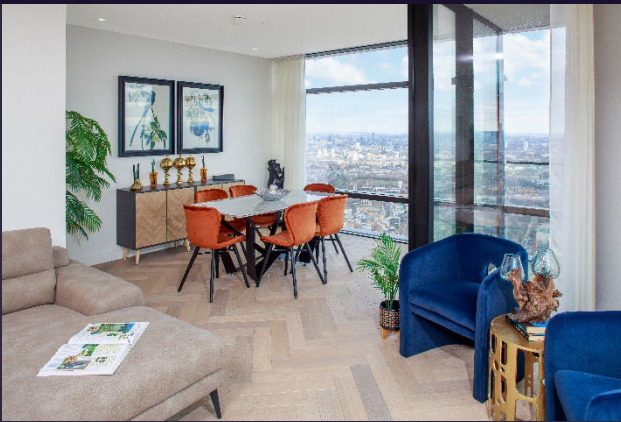
020 3883 3333



Info@Principaltower.com



PRINCIPAL TOWER  
LONDON EC2





**PRINCIPAL TOWER**  
LONDON EC2

**A PRINCIPAL ADDRESS**

Principal Tower offers the opportunity to own an architectural masterpiece, equivalent to a priceless piece of art, that will give constant pleasure and lasting value.

Designed by Foster + Partners, Principal Tower signifies the epitome of understated elegance.

This stunning penthouse comprises of approximately 1,373 sq ft offering open plan living/kitchen room, 2 en-suites, 1 powder room and 3 terraces.

Unit #	Type	Enclosed SQFT	Aspect	Listed Price	Listed Price £/sqft
4502	2 Bed	1,373	N & W	£2,835,000	£2,064

**APARTMENT 02**

2 BEDROOM PENTHOUSE  
FLOORS 44-47

APARTMENT	1,273m <sup>2</sup> / 13,728ft <sup>2</sup>	Living/dining/kitchen	14.86 x 5.27m / 48'9" x 17'3"	Powder Room	1.32 x 2.10m / 4'4" x 6'11"
TERRACES	19.1m <sup>2</sup> / 205ft <sup>2</sup>	Master Bedroom	6.76 x 5.25m / 22'2" x 17'2"	Terrace 1	5.79 x 2.04m / 18'12" x 6'8"
		En-suite 1	3.14 x 2.00m / 10'3" x 6'5"	Terrace 2	2.08 x 1.29m / 7'0" x 5'10"
		Bedroom 2	3.18 x 3.01m / 10'5" x 9'10"	Terrace 3	2.68 x 1.29m / 7'0" x 5'10"
		En-suite 2	2.71 x 2.77m / 8'10" x 9'1"		



020 3883 3333



Info@Principaltower.com



## PRINCIPAL TOWER

LONDON EC2

---

### BOOK APPOINTMENT TO VIEW

---

Principal Tower Sales  
Office Apartment 205,  
Principal Tower,  
2 Principal Place,  
Worship Street,  
London,  
EC2A 2BA



020 3883 3333



Info@Principaltower.com