



PRINCIPAL TOWER

LONDON EC2



PRINCIPAL TOWER
2 PRINCIPAL PLACE | LONDON

£9,900,000 | LEASEHOLD

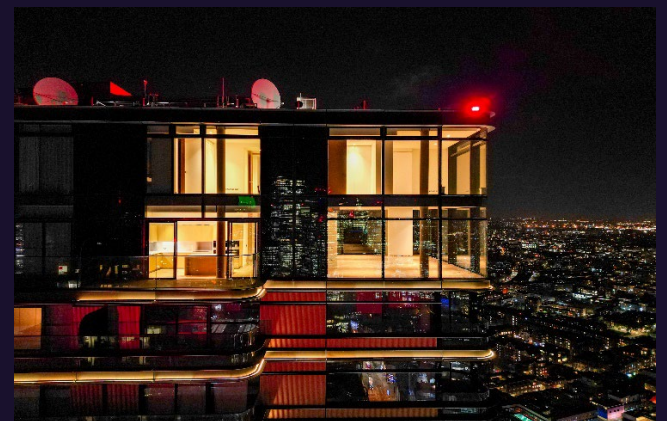
4 8 0 2 Principal Tower, 2 Principal Place, London EC2A 2FG

3 Bedrooms | 3 Bathrooms | Kitchen | Terrace | Lift

 020 3883 3333  Info@Principaltower.com



PRINCIPAL TOWER
LONDON EC2



020 3883 3333



Info@Principaltower.com

*Computer generated images and photography are intended for illustrative purposes only and should be treated as general guidance only



PRINCIPAL TOWER
LONDON EC2

A PRINCIPAL ADDRESS

Principal Tower offers the opportunity to own an architectural masterpiece, equivalent to a priceless piece of art, that will give constant pleasure and lasting value.

Designed by Foster + Partners, Principal Tower signifies the epitome of understated elegance.

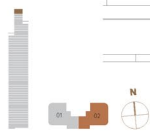
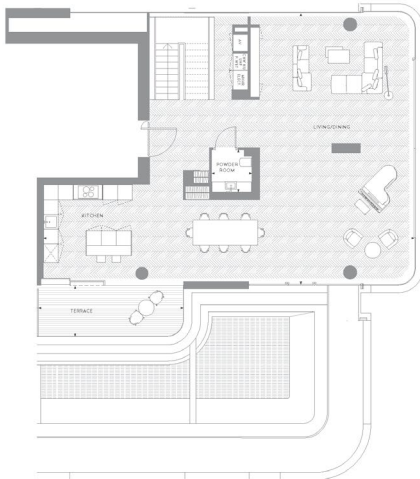
This stunning duplex penthouse comprises of approximately 2,855 sq ft offering open plan living/kitchen room, 3 en-suites and 1 powder room and a terrace.

Unit #	Type	Enclosed SQFT	Aspect	Listed Price
4802	3 Bed	2,855	N & E & S	£9,900,000

APARTMENT 02

3 BEDROOM DUPLEX PENTHOUSE
FLOOR 48

APARTMENT	1,023m ² / 11,027ft ²	Living/dining/kitchen	14,901 x 10,546m / 48,917' x 34,592'
TERRACE	11,797m ² / 126,571ft ²	Powder Room	1,560 x 1,939m / 5,117' x 6,362'
		Terrace	3,179 x 20,641m / 10,428' x 67,881'



KEY

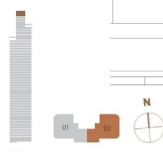
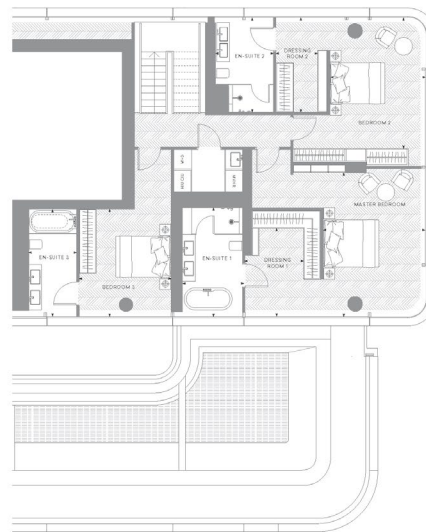
HD	Hardwood floor	AV	Auto-V. Vent
CMF	Cold Water	WC	Wash-Cycle
MVR	Mechanical ventilation heat with recovery	PC	Pre-Cast Concrete Panel

Scale 1:

APARTMENT 02

3 BEDROOM DUPLEX PENTHOUSE
FLOOR 48

APARTMENT	1,023m ² / 11,027ft ²	Master Bedroom	3,74 x 5,67m / 12'3" x 18'7"	Bedroom 3	2,75 x 3,34m / 9'0" x 11'0"
		En-suite 1	3,20 x 3,85m / 10'6" x 12'7"	En-suite 3	1,75 x 3,79m / 5'9" x 12'5"
		Dressing Room 1	3,71 x 3,84m / 12'2" x 12'6"		
		Bedroom 2	3,50 x 4,75m / 11'5" x 15'6"		
		En-suite 2	2,33 x 3,44m / 7'8" x 11'3"		
		Dressing Room 2	1,53 x 3,44m / 5'0" x 11'3"		



KEY

HD	Hardwood floor	AV	Auto-V. Vent
CMF	Cold Water	WC	Wash-Cycle
MVR	Mechanical ventilation heat with recovery	PC	Pre-Cast Concrete Panel

Scale 1:105 = 1m/39.3"



020 3883 3333



Info@Principaltower.com



PRINCIPAL TOWER

LONDON EC2

BOOK APPOINTMENT TO VIEW

Principal Tower Sales
Office Apartment 205,
Principal Tower,
2 Principal Place,
Worship Street,
London,
EC2A 2BA



020 3883 3333



Info@Principaltower.com